

INSTALLATION INSTRUCTIONS

Item# 1913-732 1913-899

READ AND SAVE THESE INSTRUCTIONS

WARNING! SHUT POWER OFF AT FUSE OR CIRCUIT BREAKER.

AVERTISSEMENT! COUPER LE COURANT AU NIVEAU DES FUSIBLES OU DU DISJONCTEUR.

PREPARATION (Fig. 1)

1. Shut off power at the fuse box or circuit breaker box and remove the old fixture including the mounting hardware.
2. Carefully unpack your new fixture and lay out all the parts in a clean area. Take care not to misplace any small parts necessary for installation.
3. Loosen mounting screw(D) to remove mounting plate (B) from fixture body(C).
4. Attach mounting plate (B) to junction box (Not included) using outlet box screws (A) (Size: #8-32N*L1"). The side of the mounting plate (B) marked "GND" must face out.

CONNECTING THE WIRES (Fig. 2)

5. Connect the electrical wires as shown in (Fig.2). Making sure that all wire connectors are secured. If your junction box has a ground wire (green or bare copper), connect fixture's ground wire to it. Otherwise, connect fixture's ground wire directly to mounting plate (B) using green screw (E) provided.
6. Tuck wire connectors neatly into the junction box.

COMPLETING THE INSTALLATION (Fig. 1)

7. Placing the fixture body (C) to the wall and carefully tuck the wires inside the outlet box. Line up the holes in back plate with holes in mounting plate (B) and secure with two mounting screws (D).
8. Install (3) three **candelabra** base T8 bulbs (L) up to 60 watts each or CFL or LED equivalent (not included) in accordance with the fixture specification. — **DO NOT EXCEED THE MAXIMUM WATTAGE RATING! (NE PAS DEPASSER LA PUISSANCE NOMINALE MAXIMALE!)**
9. Secure inner glass shade (G) over the socket by using lock screws (F). Raise metal ring (H) and outer glass shade (K) up toward the arm of the fixture body(C) and secure the outer glass (K) onto the hole of the arm of fixture body(C) by using plastic washers(J) and lock nuts (I). Do not over tighten. Allow metal ring (H) rest on the lock nuts (I).

Your installation is now complete. Return power to the junction box and test the fixture.

Note: Illustration (Fig. 1) on this manual is for installation purposes only. It may or may not be identical to the fixture purchased.

Fig. 1

Set# A-021-525115
-Mounting Plate*1
-Ground Screw*1
-Mounting Screw*2
-Outlet Box Screw*2

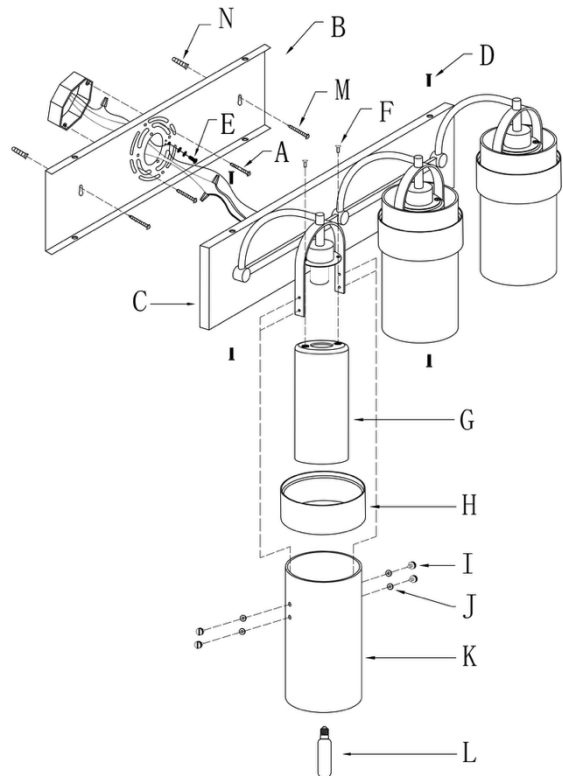
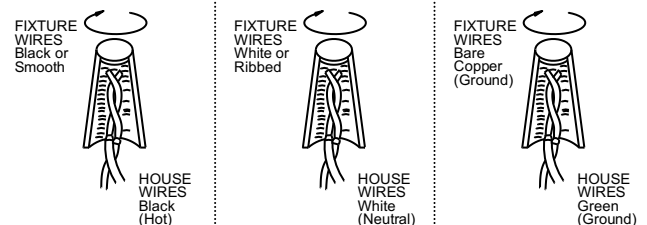


Fig. 2



american
lighting
association