

INSTALLATION INSTRUCTION FOR N1549

WARNING! SHUT POWER OFF AT FUSE OR CIRCUIT BREAKER .
AVERTISSEMENT! COUPER LE COURANT AU NIVEAU DES FUSIBLES OU DU DISJONCTEUR.

READ AND SAVE THESE INSTRUCTIONS

This fixture can be mounted in two ways: **PENDANT OR SEMI FLUSH MOUNT**

PREPATION

1. Shut off the power at the fuse box or circuit breaker box. If necessary, remove the old fixture and all mounting hardware from junction box (not provided).
2. Carefully unpack your new fixture and lay out all the parts on a clear area. Take care not to lose any parts necessary for installation.

PENDANT:(Fig.1)

3. Determine desired hanging height and thread rods (M, N) to coupling of the fixture (O). Then thread loop (L) onto rod (M). Pass wires carefully through each rod and loop (L).

SEMI FLUSH MOUNT:(Fig.2)

4. Thread loop (L) into coupling of the fixture (O).

MOUNTING THE FIXTURE (Fig.1)

5. Install a 1/4" IPS pipe (Not provided) with one end securely mounted to a beam of a structural member. The other end should protrude through the center of the outlet box as shown.
6. Secure hex nut (B) and washer (A) onto the 1/4" IPS pipe (Not provided) and then secure hickey (D) tightly.
7. Thread hex nut (B) and washer (A) onto all thread (F), then thread all thread (F) into the hickey (D); and secure with hex nut (B) on the other end of all thread (F). Thread ceiling loop (J) onto all thread (F) and fix with hex nut (B). The all thread (F) may be adjusted if necessary.
8. Slip lock collar (G), marble cap (C) and canopy (H) over loop (L) and rods, allowing them to rest on fixture coupling (O).
9. Use the quick link (K) to connect loop (L) and ceiling loop (J) and close the quick link (K).
10. Feed the fixtures wires and safety cable (E) through quick link (K), lock collar (G), marble cap (C), canopy (H) and all thread (F) and allow wires to exit through the side of hickey (D). Run safety cable through the hickey (D) and wrap one circle, secure safety cable with set screw assembly and set screw provided.

CONNECTING THE WIRES (Fig.3)

11. Connect the electrical wires as shown in Fig.3, making sure that all wire connectors are secured. If your junction box has a ground wire (green or bare copper), connect ground wires to it. Otherwise, consult an electrician for grounding wire connection.
12. Tuck wire connectors neatly into junction box.

COMPLETING THE INSTALLATION (Fig. 1)

13. Raise canopy (H) and marble cap (C) to ceiling. Then raise lock collar (G) and thread onto the collar loop (J) protruding through canopy (H) and marble cap (C).
14. Install (12) twelve candelabra base bulbs up to 60 watts each or CFL or LED equivalent (not included) in accordance with the fixture specification. **(DO NOT EXCEED THE SPECIFIED WATTAGE!)** (NE PAS DEPASSER LA PUISSANCE NOMINALE MAXIMALE!)

Fig.1

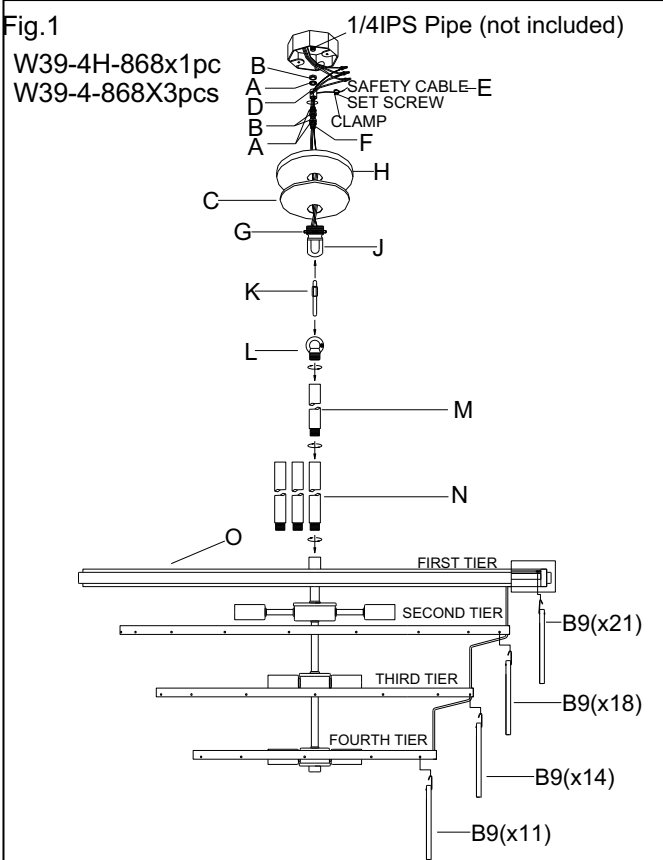


Fig.2

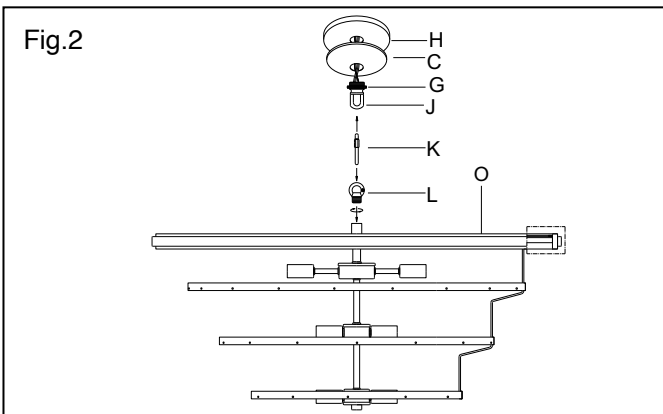
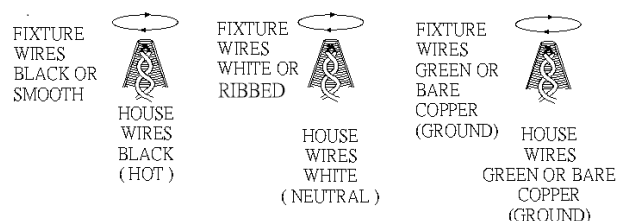


Fig.3



15. Hook marble pieces (B9) to fourth tier of the fixture (O).

16. Hook marble pieces (B9) to third tier of the fixture (O)).

17. Hook marble pieces (B9) to second tier of fixture (O).

18. Hook marble pieces (B9) to first tier of the fixture (O).

Your installation is now complete. Return power to the outlet box (not provided) and test the fixture.

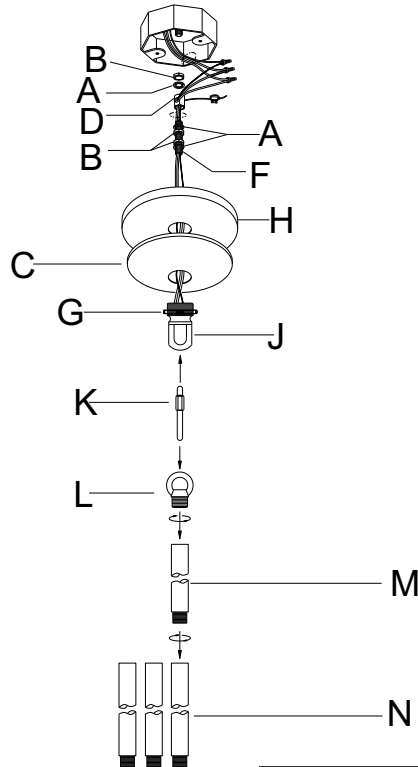
Note: Illustration (Fig.1) on this manual is for installation purposes only. It may or may not be identical to the fixture purchased.

This Luminaire must be mounted or supported independently of an outlet box

IMPORTANT: Fixture should be installed by a qualified electrician to ensure proper wiring and installation.

ATTENTION: You have purchased a product made with natural materials. It will exhibit naturally formed pits, voids, surface imperfections, and coloring variations not controlled by manufacturing.

The appearance of natural materials can be affected by household cleansers and dirt. Please test any intended cleansers in an obscure location before applying to the visible surfaces.



a. Hardware Bag:

A. Washer *3

B. Hex nuts *3

C. Marble cap*1

D. Hickey *1

F. Nipple *1

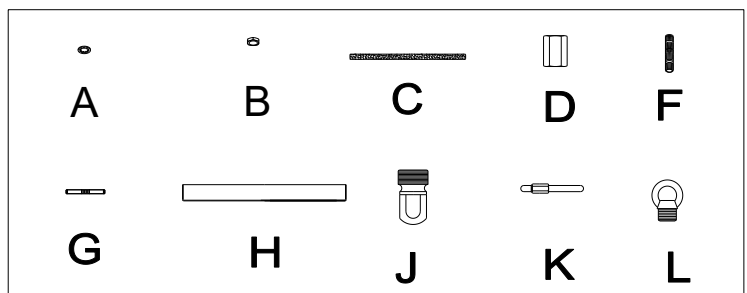
G. Collar ring *1

H. Canopy *1

J. Collar loop *1

K. Quick link *1

L. Loop *1



b. Hardware Bag:

N. Rod 12" *3

M. Rod 6" *1

