

INSTALLATION INSTRUCTIONS

Item#P5436-697-L & P5437-697-L (Rev. 09/30/2025)

READ AND SAVE THESE INSTRUCTIONS

WARNING! SHUT POWER OFF AT FUSE OR CIRCUIT BREAKER.

AVERTISSEMENT! COUPER LE COURANT AU NIVEAU DES FUSIBLES OU DU DISJONCTEUR.

PREPARATION

1. Carefully remove the fixture from the carton and check that all parts are included as shown in the illustration.
2. Shut off power at the circuit breaker and remove the old fixture including the mounting hardware.

MOUNTING THE FIXTURE (Fig. 1)

3. Attach the mounting plate (A) to the outlet box (Not included) using mounting screws (B) (Size: #8-32N*L1"L) as shown in Fig. 1.
Noted: The side of mounting plate (A) marked "GND" must face out.
4. Determine the desired hanging height and thread rods (F1, F2) to all thread of fixture body. Carefully pass wires through each rod during assembly. Secure swivels (G) onto rods (F1).
5. Align metal plate (E) and canopy (D) followed by lock washer (H) onto swivels (G) and secure with hex nuts (I) via wrench (J) (not included).

CONNECTION THE WIRES (Fig. 2)

6. There is one driver inside canopy, connect driver output wire to LED wires as listed below. Secure with wire connectors.
 - Red driver output wire (labeled Output+) to red LED wire (labeled LED+)
 - Yellow driver output wire (labeled Output-) to yellow LED wire (labeled LED-)
7. At this point, connect the electrical wires as shown in Fig. 2, making sure that all wire connectors are secured. If your outlet has a ground wire (green or bare copper), connect the fixture's ground wire to it. Otherwise, connect the fixture ground wire directly to the mounting plate (A) using the green screw provided. After wires are connected, tuck them carefully inside the junction box.

FINISHING THE INSTALLATION (Fig. 1)

8. Align the canopy (D) over the mounting plate (A) and secure with screws (C).
9. Adjust each frame on the fixture body as Fig.3.

Note: Illustration (Fig. 1) on this manual is for installation purpose only. It may or may not be identical to the fixture purchased.

Dimmable with ELV and/or LED compatible wall dimmer switch.

Fig. 3

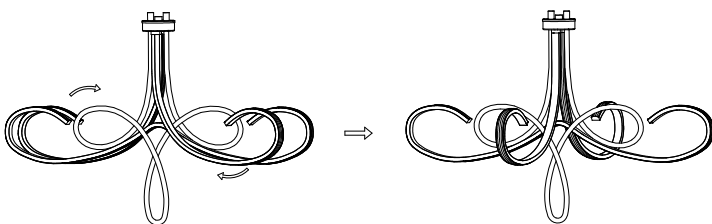
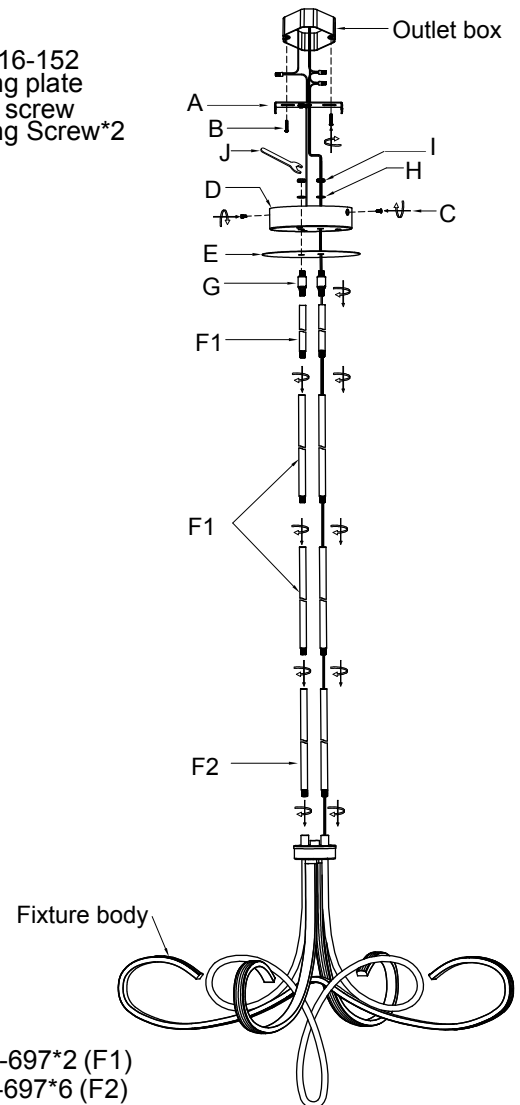


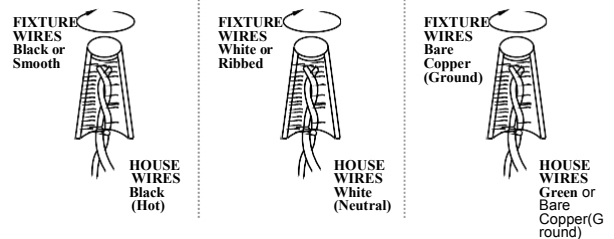
Fig. 1

Set# A-016-152
- Mounting plate
- Ground screw
- Mounting Screw*2



Rod#
- W30-H-697*2 (F1)
- W30-1-697*6 (F2)

Fig.2



IMPORTANT: FIXTURE SHOULD BE INSTALLED BY A QUALIFIED ELECTRICIAN TO ENSURE PROPER WIRING AND INSTALLATION.



Intertek

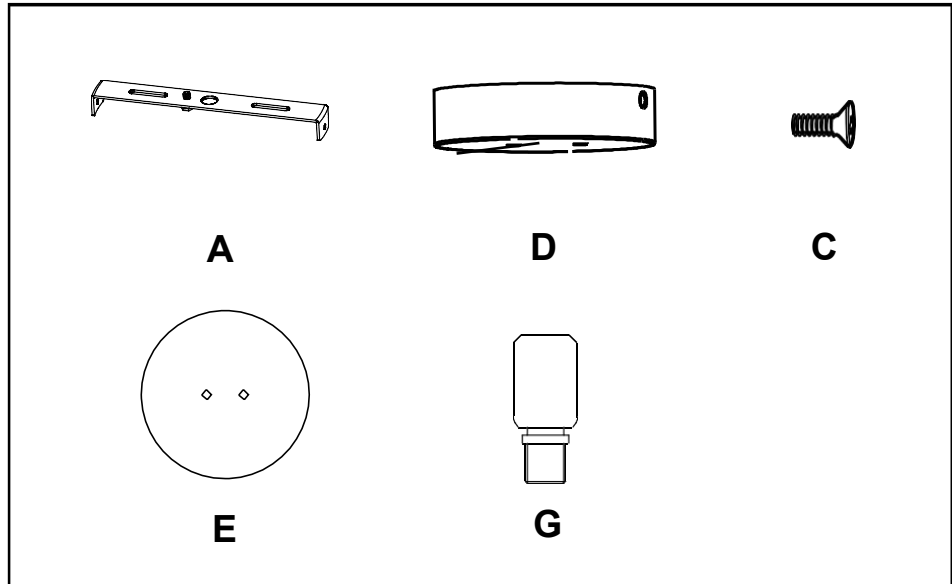
american
lighting
association

Fig.4

a. Hardware Bag

- A. Mounting Plate*1
- D. Canopy*1
- E. Metal plate*1
- C. Mounting screw*2
- G. Swivel*2

Note: The fixture can be adjusted Max 15 degrees only in the vertical direction of two swivels.



b. Hardware Bag:

- F1. ROD 6"*2
- F2. ROD 12"*6

